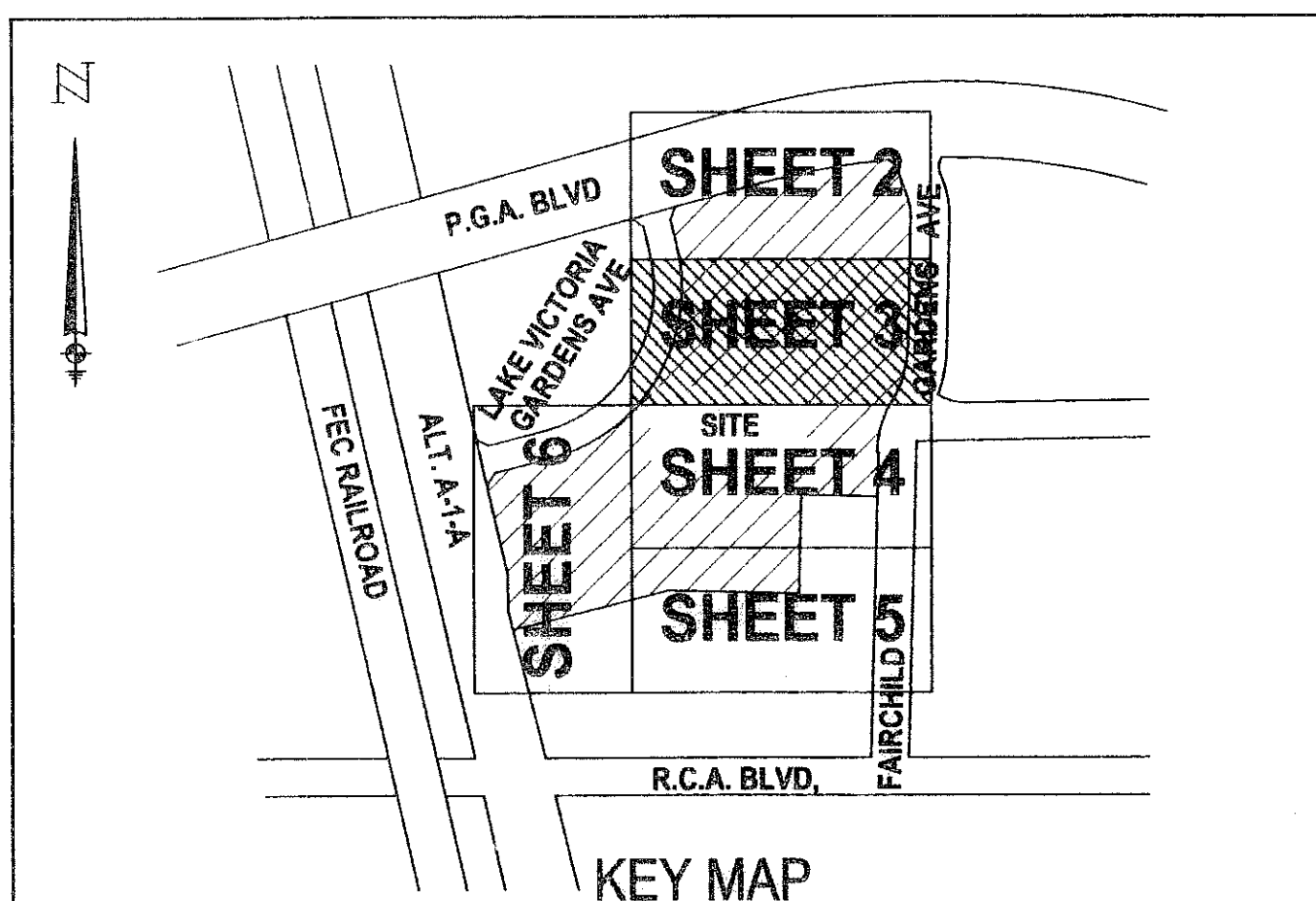
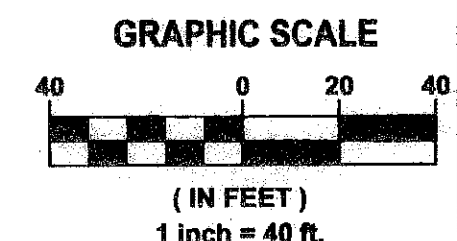


LEGACY PLACE COMMERCIAL REPLAT

BEING A REPLAT OF TRACT "A" AND WATER MANAGEMENT TRACTS "L-1" THROUGH "L-4", LEGACY PLACE COMMERCIAL,
 AS RECORDED IN PLAT BOOK 108, PAGES 29 THROUGH 36, PUBLIC RECORDS OF PALM BEACH COUNTY, FLORIDA
 LYING IN SECTION 6, TOWNSHIP 42 SOUTH, RANGE 43 EAST
 CITY OF PALM BEACH GARDENS, PALM BEACH COUNTY, FLORIDA
 SHEET 3 OF 7 AUGUST, 2007

120

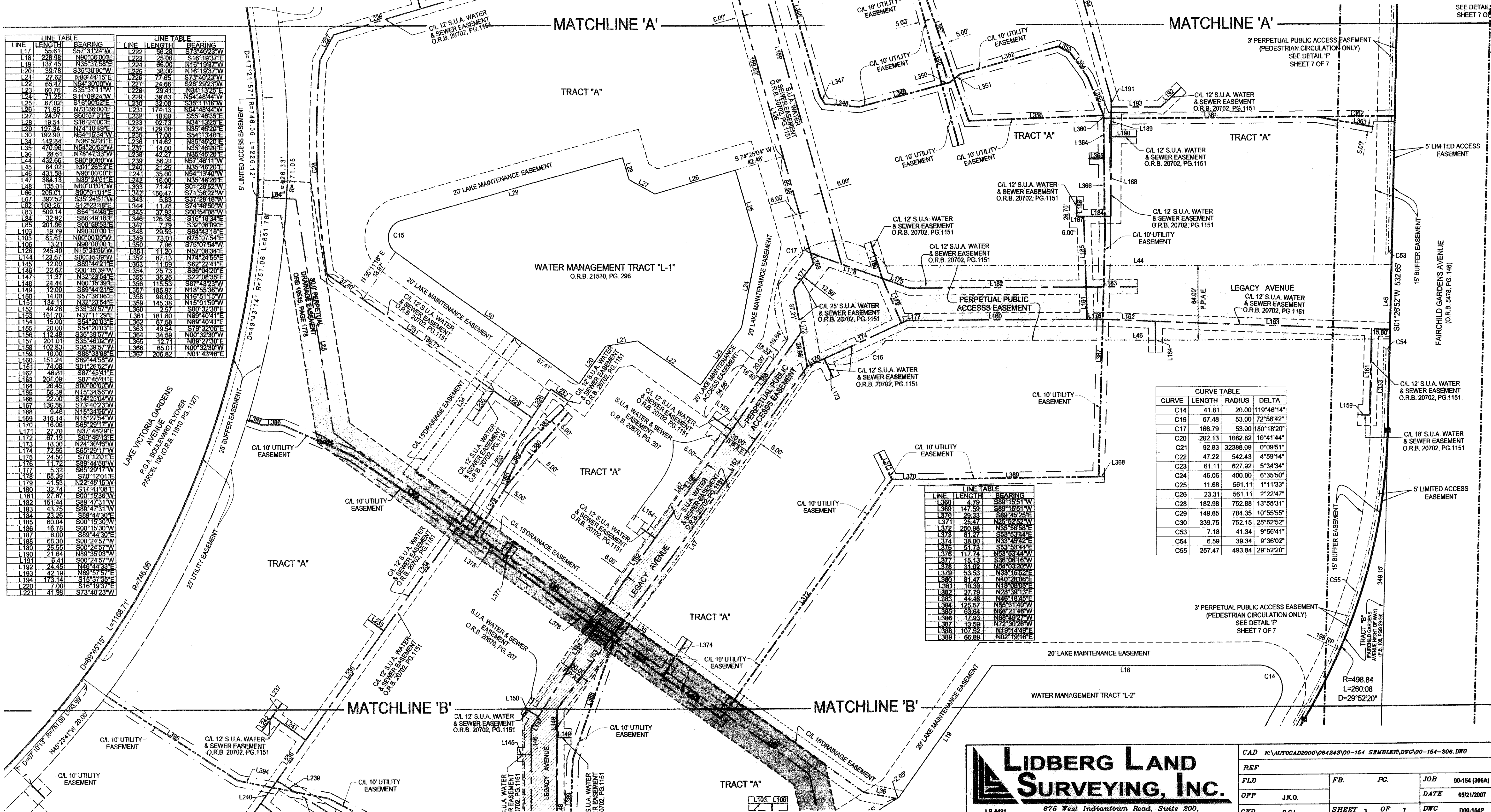
STATE OF FLORIDA
 COUNTY OF PALM BEACH
 This plat was filed for
 record at _____ M. this day
 of _____, 2007 and duly
 recorded in Plat Book No. _____
 on Pages _____ thru _____
 By _____ D.C.
 Sharon R. Bock
 Clerk and Comptroller



LINE	LENGTH	BEARING	LINE	LENGTH	BEARING
L171	55.61	S57°31'22"W	L223	25.00	S16°19'37"W
L18	229.98	N90°00'00"E	L224	66.00	N16°19'37"W
L19	137.45	N35°37'58"E	L225	38.00	N16°19'37"W
L20	39.78	S35°30'00"W	L226	77.66	S19°00'00"E
L21	27.52	N89°44'16"E	L227	24.66	S28°29'23"W
L22	65.47	N54°30'00"W	L228	29.41	N34°13'25"E
L23	60.76	S35°37'11"W	L229	39.83	N54°48'44"W
L24	71.25	S11°06'25"W	L230	62.00	S35°11'18"W
L25	67.02	S16°00'00"E	L231	174.13	N54°48'44"W
L26	71.96	N73°36'09"E	L232	18.00	S55°48'35"E
L27	24.97	S60°57'31"E	L233	62.00	N34°13'25"E
L28	18.54	S16°40'00"E	L234	129.08	N35°48'20"E
L29	191.24	N4°10'49"E	L235	17.00	S54°13'40"E
L30	192.90	N54°13'40"W	L236	114.62	N35°48'20"E
L31	142.84	N36°52'31"E	L237	14.00	N35°48'20"E
L32	470.86	N54°20'53"W	L238	42.27	N35°48'20"E
L33	28.61	N78°47'33"W	L239	56.21	N57°46'11"W
L34	432.66	S90°00'00"W	L240	21.25	N35°48'20"E
L35	470.86	N54°20'53"W	L241	35.00	N54°13'40"E
L36	28.61	N78°47'33"W	L242	16.00	N35°48'20"E
L37	432.66	S90°00'00"W	L243	71.47	S01°26'52"W
L38	470.86	N54°20'53"W	L244	150.47	S71°58'22"W
L39	392.42	S35°45'11"W	L245	5.83	S37°27'18"W
L40	108.26	S12°23'48"E	L246	11.78	S74°48'50"W
L41	500.14	S54°14'46"E	L247	37.93	S00°54'08"W
L42	42.92	S89°44'16"E	L248	126.98	S75°07'54"E
L43	42.92	S89°44'16"E	L249	7.96	S75°07'54"E
L44	201.96	S08°59'53"E	L250	11.96	N52°08'54"E
L45	19.79	N50°00'00"E	L251	11.96	N52°08'54"E
L46	81.61	N00°00'00"W	L252	87.13	N74°24'55"E
L47	13.21	N00°00'00"W	L253	11.59	S62°22'41"E
L48	245.40	N15°34'58"W	L254	28.72	S38°04'30"E
L49	123.57	S00°16'39"W	L255	39.25	S22°08'35"E
L50	12.00	S89°44'16"E	L256	115.53	S87°43'22"W
L51	42.92	S89°44'16"E	L257	185.97	N18°55'36"W
L52	42.92	S89°44'16"E	L258	87.98	N89°40'41"E
L53	134.11	N32°23'54"E	L259	145.98	N15°01'59"W
L54	49.28	S35°39'57"W	L260	2.57	S00°32'30"E
L55	161.70	S00°00'00"W	L261	181.80	N35°48'20"E
L56	15.00	S54°20'03"E	L262	17.71	N89°27'30"E
L57	20.00	S54°20'03"E	L263	49.54	S79°32'06"E
L58	112.48	S35°39'57"W	L264	34.59	N00°32'30"E
L59	201.01	S35°40'00"W	L265	12.71	N89°27'30"E
L60	102.83	S35°39'57"W	L266	65.01	N00°32'30"E
L61	10.00	S88°33'08"E	L267	206.82	N01°43'48"E
L62	151.24	S89°44'16"E			
L63	14.08	S91°26'58"W			
L64	46.81	S87°45'41"E			
L65	201.09	S87°45'41"E			
L66	26.45	S00°00'00"W			
L67	19.39	N15°34'58"W			
L68	22.00	S74°25'04"W			
L69	136.85	S73°40'23"W			
L70	3.46	N15°34'58"W			
L71	316.14	N15°27'54"W			
L72	16.06	S65°29'17"W			
L73	27.70	N37°48'29"E			
L74	67.19	S00°00'00"W			
L75	18.00	N24°30'43"W			
L76	72.55	S65°29'17"W			
L77	24.50	S70°12'01"E			
L78	11.12	S89°44'16"E			
L79	5.32	S89°29'17"W			
L80	65.39	S70°12'01"E			
L81	41.53	N22°45'15"E			
L82	32.74	S17°41'08"E			
L83	27.87	S00°15'30"W			
L84	151.44	S89°47'31"W			
L85	43.73	N89°47'31"W			
L86	23.28	S89°44'30"E			
L87	60.04	S00°15'30"W			
L88	16.78	S00°15'30"W			
L89	6.00	S89°44'30"E			
L90	68.30	S00°24'57"W			
L91	25.55	S00°24'57"W			
L92	21.64	N89°35'03"W			
L93	6.41	S00°24'57"W			
L94	24.45	N46°44'33"E			
L95	42.19	N89°57'57"E			
L96	173.14	S15°37'36"E			
L97	10.00	S16°18'29"E			
L98	41.99	S73°40'23"W			

CURVE	LENGTH	RADIUS	DELTA
C14	41.81	20.00	119°46'14"
C16	67.48	53.00	72°56'42"
C17	166.79	53.00	180°18'20"
C20	202.13	1082.82	10°41'44"
C21	92.83	32388.09	0°09'51"
C22	47.22	542.43	4°59'14"
C23	61.11	627.92	5°34'34"
C24	46.06	400.00	6°35'50"
C25	11.68	561.11	1°11'33"
C26	23.31	561.11	2°22'47"
C28	182.98	752.88	13°55'31"
C29	149.65	784.35	10°55'55"
C30	339.75	752.15	25°52'52"
C53	7.18	41.34	9°56'41"
C54	6.59	39.34	9°36'02"
C55	257.47	493.84	29°52'20"

LINE	LENGTH	BEARING
L368	4.79	S89°15'51"W
L369	147.69	S89°15'51"W
L370	29.33	S89°45'25"E
L371	25.47	N55°52'52"W
L372	250.98	N35°56'35"E
L373	61.27	S33°33'44"E
L374	38.00	N33°45'42"E
L375	51.73	S55°53'44"E
L376	117.74	N55°53'44"W
L377	15.13	S89°09'16"W
L378	31.02	N54°03'20"W
L379	53.53	N33°16'52"E
L380	81.47	N40°28'05"E
L381	10.30	N18°08'05"E
L382	27.79	N28°39'13"E
L383	44.48	N46°18'45"E
L384	126.57	N55°13'09"W
L385	63.64	N66°21'46"W
L386	17.93	N88°49'27"W
L387	43.59	N72°30'26"W
L388	107.74	N18°14'49"E
L389	66.86	N02°19'16"E



LIDBERG LAND SURVEYING, INC.
 675 West Indian Town Road, Suite 200,
 Jupiter, Florida 33468 TEL: 561-746-8454

REF	FB	FC	JOB
FLD			00-154 (306A)
OFF	J.K.O.		DATE 09/21/2007
CKD	D.C.L.	SHEET 3 OF 7	DWG D00-154P